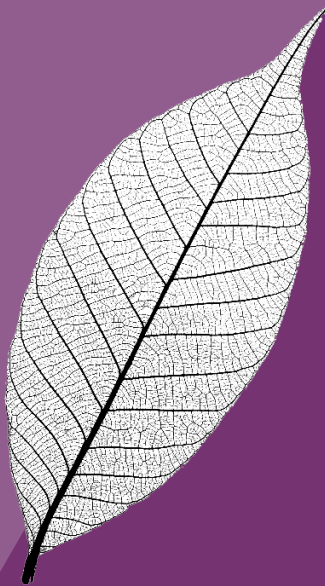


# NewSpring Franchise



NewSpring Franchise invests in innovative franchise and multi-unit concepts in large and growing markets. We are uniquely positioned within the lower-middle market with over 40 years of sector specific operating and investing experience.

NewSpring Franchise is part of NewSpring, which partners with the innovators, makers, and operators of high-performing companies in dynamic industries to catalyze new growth and seize compelling opportunities. We manage approximately \$3.5 billion across five distinct strategies covering the spectrum from growth equity and control buyouts to mezzanine debt.

## ABOUT NEWSRING

~\$3.5bn

Assets under management

5

Investment strategies

200+

Investments made since 1999

40+

Investment professionals

## NEWSRING FRANCHISE INVESTMENT CRITERIA

### Company Size

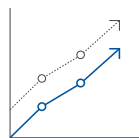
\$5mm - \$50mm

Revenue

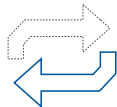
\$1mm - \$5mm

EBITDA

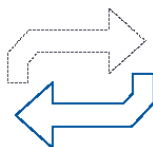
### Transaction Types



Growth Equity



Recapitalizations



Management Buyout

### Multi-Unit Companies

- Franchisors

- Franchisees

- Non-Franchised  
Company-Owned

### Representative Sectors

- Restaurants
- Pet Services

- Personal Care
- Home Services

- Education and Child  
Related Services

### Differentiating Factors

- Seasoned team of former CEOs and senior execs with experience focused exclusively on the multi-unit brand market
- Leverage from NewSpring infrastructure and 20-year investment track record
- Deep operating DNA utilized in an active board role to create value supplemented by a network of operating experts
- Utilizing NewSpring's proven "ThreeM" Investment Methodology to underwrite deals while preserving capital and maintaining upside potentials
- Position portfolio companies for maximum value creation with attractive avenues for exit to up-market sponsors and over 100 public brands

## NEWSRING FRANCHISE INVESTMENT TEAM



Satya Ponnuru

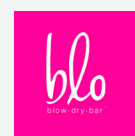


Patrick Sugrue



Sean Whitehead

### Team Operational Experience



SALADWORKS



## CONTACT

For investment opportunities or questions, please contact:  
Adam VeVerka at 610.567.2392 or aveverka@newspringcapital.com  
Ryan Schafer at 630.621.8305 or rschafer@newspringcapital.com

## OUR LOCATIONS

Philadelphia • Baltimore • Chicago • Denver • New York  
Phone: 610.567.2380 • newspringcapital.com



Blo is North America's original blow dry bar and the world's largest blow dry bar franchise



Duck Donuts is one of the nation's fastest-growing donut franchise companies



Central Bark is a leading pet services franchisor, offering boarding, grooming, training services and specialty products



Federal Donuts is a Philadelphia-based culinary pioneer in the fast-casual space serving donuts, fried chicken, and coffee



Green Home Solutions is a leading home services franchisor providing mold remediation and indoor air quality services



Shake Smart is an operator and licensor providing healthy and convenient meal replacement offerings

**CONTACT**

For investment opportunities or questions, please contact:  
Adam VeVerka at 610.567.2392 or [aveverka@newspringcapital.com](mailto:aveverka@newspringcapital.com)  
Ryan Schafer at 630.621.8305 or [rschafer@newspringcapital.com](mailto:rschafer@newspringcapital.com)

**OUR LOCATIONS**

Philadelphia • Baltimore • Chicago • Denver • New York  
Phone: 610.567.2380 • [newspringcapital.com](http://newspringcapital.com)